



Meijer Holland

bale handling systems

Flintstone

Manual
Bale collector



Content

1. Introduction	4
2. Technical specifications.....	5
3. Safety	6
4. The functioning of the Flintstone.....	7
5. Installation and adjustment.....	8
6. Mounting the Flintstone platform to the baler.....	10
7. Maintenance.....	12
8. Problems and solutions	13
9. Environment and disposal	14
10. Assembly drawings.....	15
CE- Declaration of conformity.....	16

1. Introduction

The Meijer Holland Flintstone bale collector is designed to be attached behind a baler in order to collect two straw or hay bales at a time. The Flintstone is mechanically powered by the force of the big baler. This manual provides an overview of all the aspects that have to be kept in mind, before, during and after the use of the machine.



It is important to read the manual carefully before using the machine. There could be a risk of serious injury or damage to the environment if the bale collector is not used properly. Moreover, damages to the material or to the machine might occur. It is therefore important to follow the instructions of this manual.

2. Technical specifications

Length	360 cm
Width	220 cm
Width rear wheels	270 cm
Height	140 cm
Weight	900 kg
Maximum load	2 bales (lxwxh) 240x120x70-90 cm



The Flintstone does not function optimally on slopes and very rough terrain.

CE-marking

This machine is certified with the CE-marking. This means that the machine meets the requirements of the applicable EC directives on safety and health. These directives are specified in the attached declaration of conformity.



- The non-observance of the rules and instructions stated in this manual is to be considered as serious negligence which leads to the extinguishment of any liability on the part of Meijer Holland concerning the resulting consequences. In this case, the risk lies exclusively with the user.
- Meijer Holland is constantly busy with the improvement of its products. Therefore it also reserves the right to make any changes that are considered necessary. There is no obligation to apply these changes to earlier delivered machines.

3. Safety

To ensure the life span and the safety of the Flintstone, please mind the following precautions.

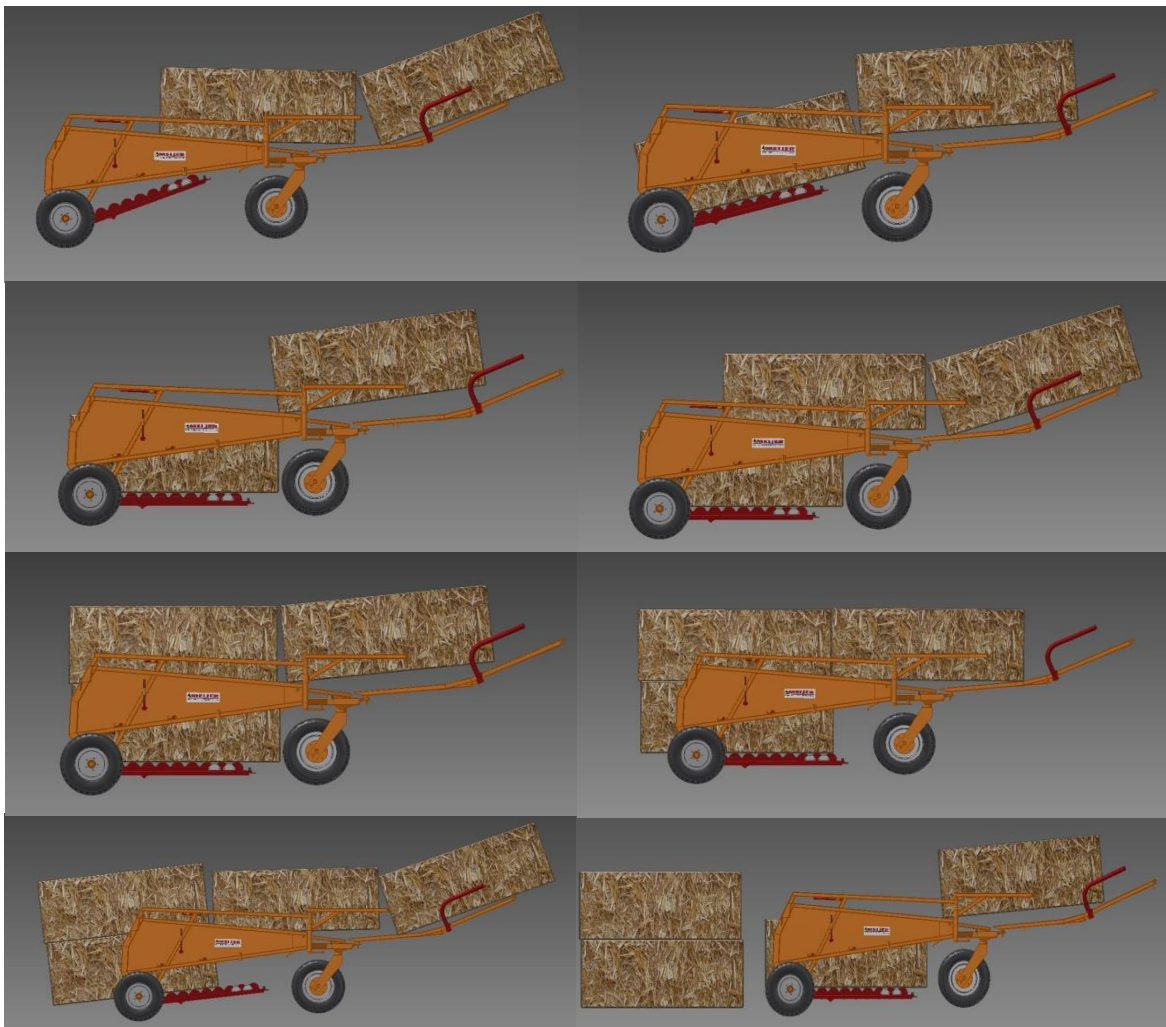
1. Read the manual before use.
2. Only experts should (dis)mount the collector.
3. Only experts should operate the collector.
4. Use the Flintstone only for collecting bales.
5. Mount the platform according to the instructions (chapter 6).
6. Follow the instructions for installation and adjustment (chapter 5).
7. The working area of the machine is 5 meters:
 - no persons are allowed within that range!
8. Mind the rules for max. load (chapter 2).
9. Follow the instructions for maintenance (chapter 7).
10. When driving a long distance or driving on a public road:
 - no bales are allowed in the collector!

4. The functioning of the Flintstone

The collector can only be used when the supplied platform is correctly attached to the baler.

- The first bale glides over the platform and tilts into the collector, pushing the spring-loaded roller conveyor down.
- The second bale glides over the first bale, forming a stack of two bales.
- The third bale pushes the two stacked bales so that they are released from the collector and placed on the field.
- After the two bales stacked on top of each other are unloaded, the third bale pushes the roller conveyor down again, starting the process from the beginning.

The functioning of the machine is illustrated below.



5. Installation and adjustment



Check the Flintstone after receipt. Please contact Meijer Holland if there are any damages or missing parts. Use the collector only if it is found to be in good order and after this manual has been read.

5.1 Installation of collector

1. Remove the platform that is attached to the baler by default.
2. Drive the tractor up to the collector so that the mounting surface is as close as possible to the mounting point of the collector.
3. Make sure that the machines stand horizontally during the installation of the collector.
4. Connect the platform with two bolts to the baler. There is a pin on the other side of the platform that connects with the ball joint hinge of the collector.
5. Use strong sealant for the strips, the platform and the pin.
6. Check by hand if the roles are turning around correctly. Do this with an even movement over the roles so that the hand does not become stuck between them.



Flintstone attached to the baling press

5.2 Adjustment

5.2.1 Spring-loaded tailgate

Position the spring in such a way that the tailgate goes back to its locked position after the unloading of the bales. When a spring is adjusted too tightly it might occur that the tailgate closes too early while the bales are passing. On the other hand it might also happen that the tailgate bangs hardly in the lock which prevents it from locking properly.

5.2.2 Roller conveyor

The roller conveyor has two chains which allow the adjustment of the minimum height of the conveyor.

5.3 After the use

- Place the bale collector with the tractor on a solid and even ground.
- Dismount the junction of the baler at the bale collector and drive the tractor away.



Store the collector in a dry and clean environment.

6. Mounting the Flintstone platform to the baler

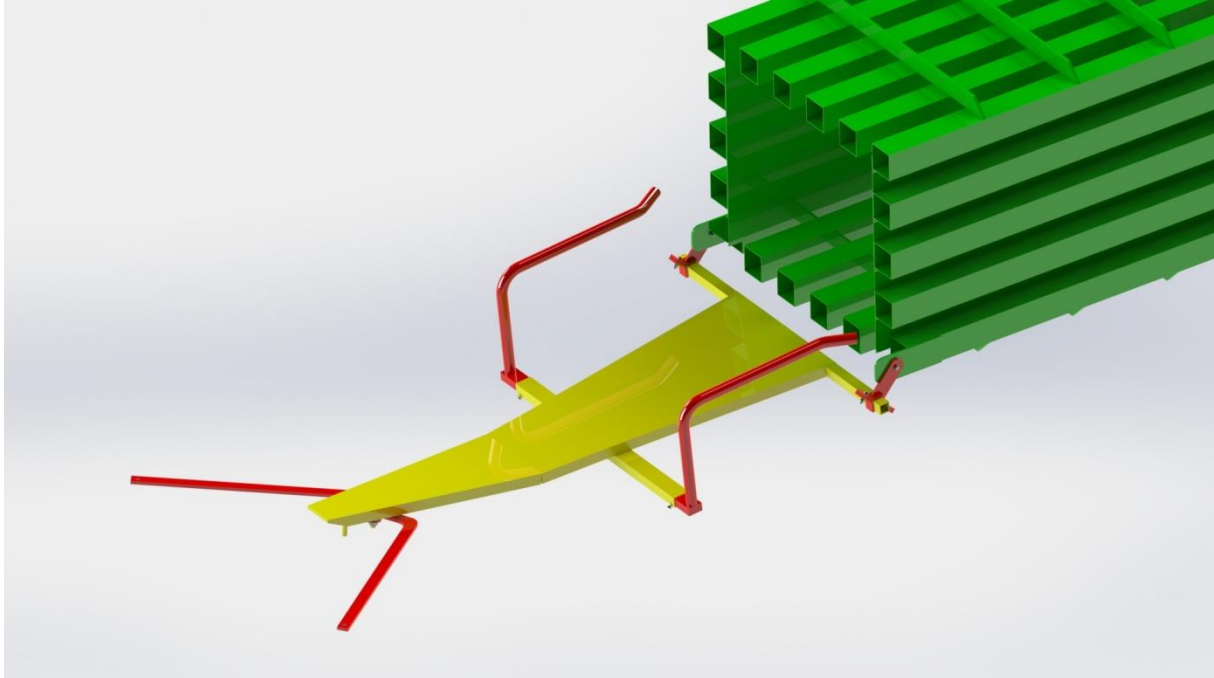
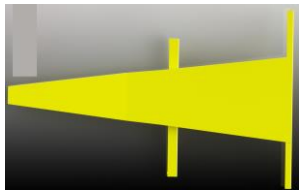


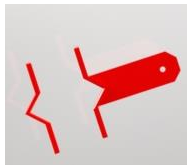


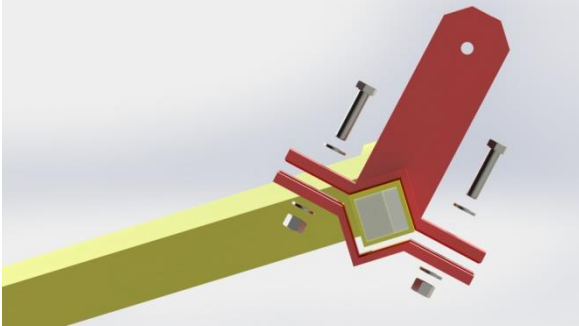
Figure 1: after complete assembly

6.1 Parts

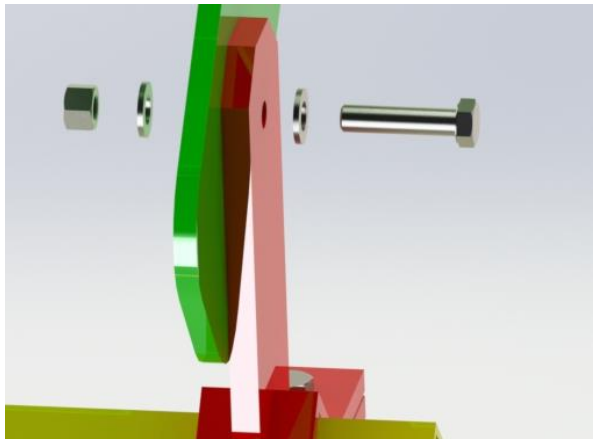
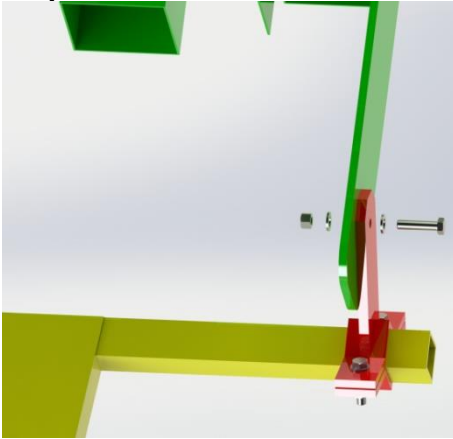
Illustration	Name	Item no.	Number of pieces
	Extended platform Flintstone	MHFS02-06	1
	Guiding bracket platform red set	MHFS02-07	1 left 1 right
	Mounting strip platform set	MHFS02-08	2
	Mounting bracket Flintstone complete	MHFS02-09	2 sets

6.2 Mounting in steps

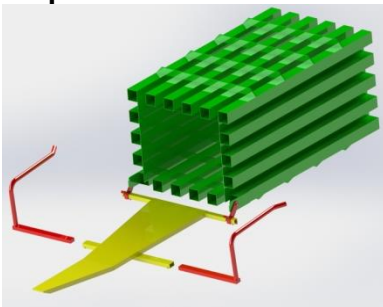
Step 1



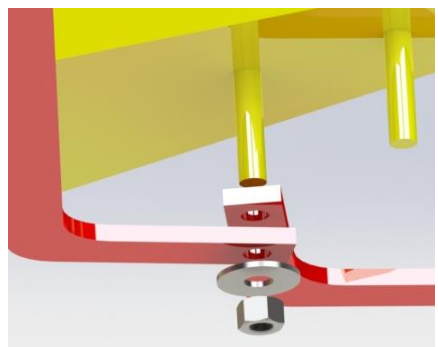
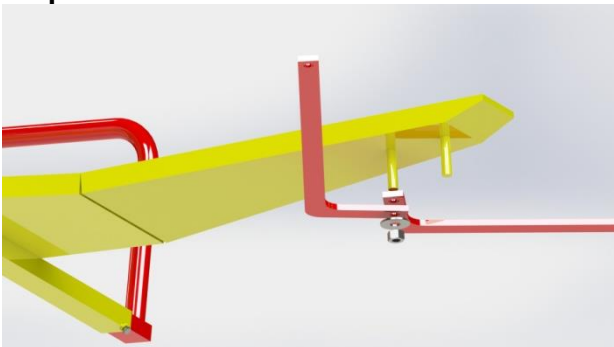
Step 2



Step 3



Step 4



7. Maintenance

Regular maintenance extends the life span of the collector.

Maintenance schedule

Before every use	Check the bale collector for damages and wear. Replace damaged or worn parts.
At least once a week	Clean the collector of caked dirt and dust. When using a high pressure washer, avoid the electrical parts.
	Fill the grease nipples on the moving parts. At extensive use: after 8 working hours add a bit of grease (0,86 grams per grease nipple).

8. Problems and solutions

The bale collector is composed of several moveable parts. Repair or replace the damaged or worn parts immediately.

Spare parts are available at Meijer Holland.



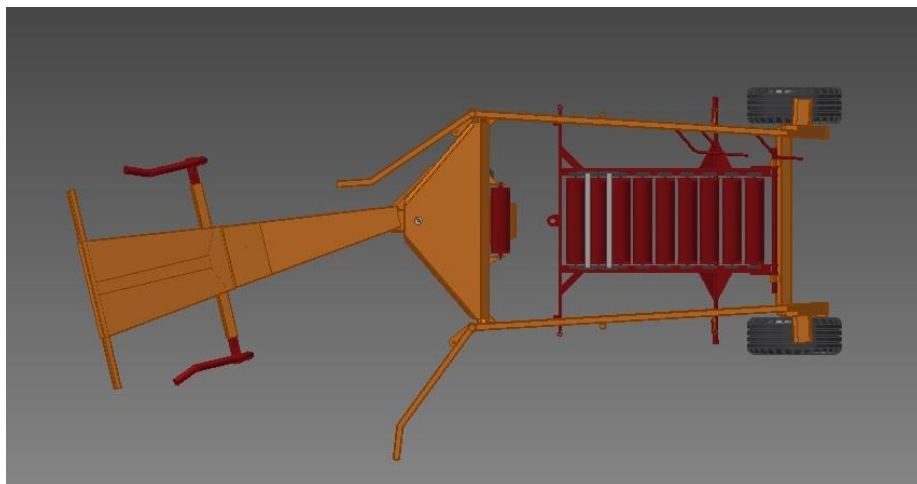
- Turn off the baler and the vehicle and block turning or moving parts when you are fixing one of the following problems.
- Disconnect the collector from the baler and from the tractor during welding.

Problem	Possible cause	Solution
The roles are not moving anymore.	The roles are blocked.	Look for the blockade and remove it.
The tailgate is not moving.	The spring is too much stretched out or it is too much tightened.	Adjust the spring as described in chapter 5. Replace the spring once it is too much stretched out.
The bales are gliding into the collector askew or not at all.	The platform has not been mounted correctly.	Mount the platform in the correct way (chapter 6).
The swivel wheel is loose.	The disc brake is loose.	Turn the disc brake more tightly.

9. Environment and disposal

The bale collector is made of coated steel that can be disposed of as scrap.

10. Assembly drawings



Top view



Side view



Isometric view

CE- Declaration of conformity

We, Meijer Holland
bale handling systems
Duinkerkenstraat 11
NL-9723 BN GRONINGEN
The Netherlands
tel. +31 (0)50-312 64 48
fax +31 (0)50-313 80 18

declare under our sole responsibility that:

1. we are the manufacturer of:

MH Flintstone (model MHFS02)

2. the machine complies with the following applicable directives

Machinery directive	2006/42/EG
EMC-directive	2004/108/EC
LVD-directive	2006/95/EC

3. The machine is designed and constructed according to European standards, including

EN 349:1993+A1:2008	EN-ISO 4413:2010
EN 614-1:2006 +A1:2009	EN-ISO 12100:2010
EN 614-2:2000 +A1:2008	

The electrics and the control section are the responsibility of the customer.

Groningen, 10th May 2016

J.F. Lommerts, *director*